

REFLECTED CEILING LEGEND

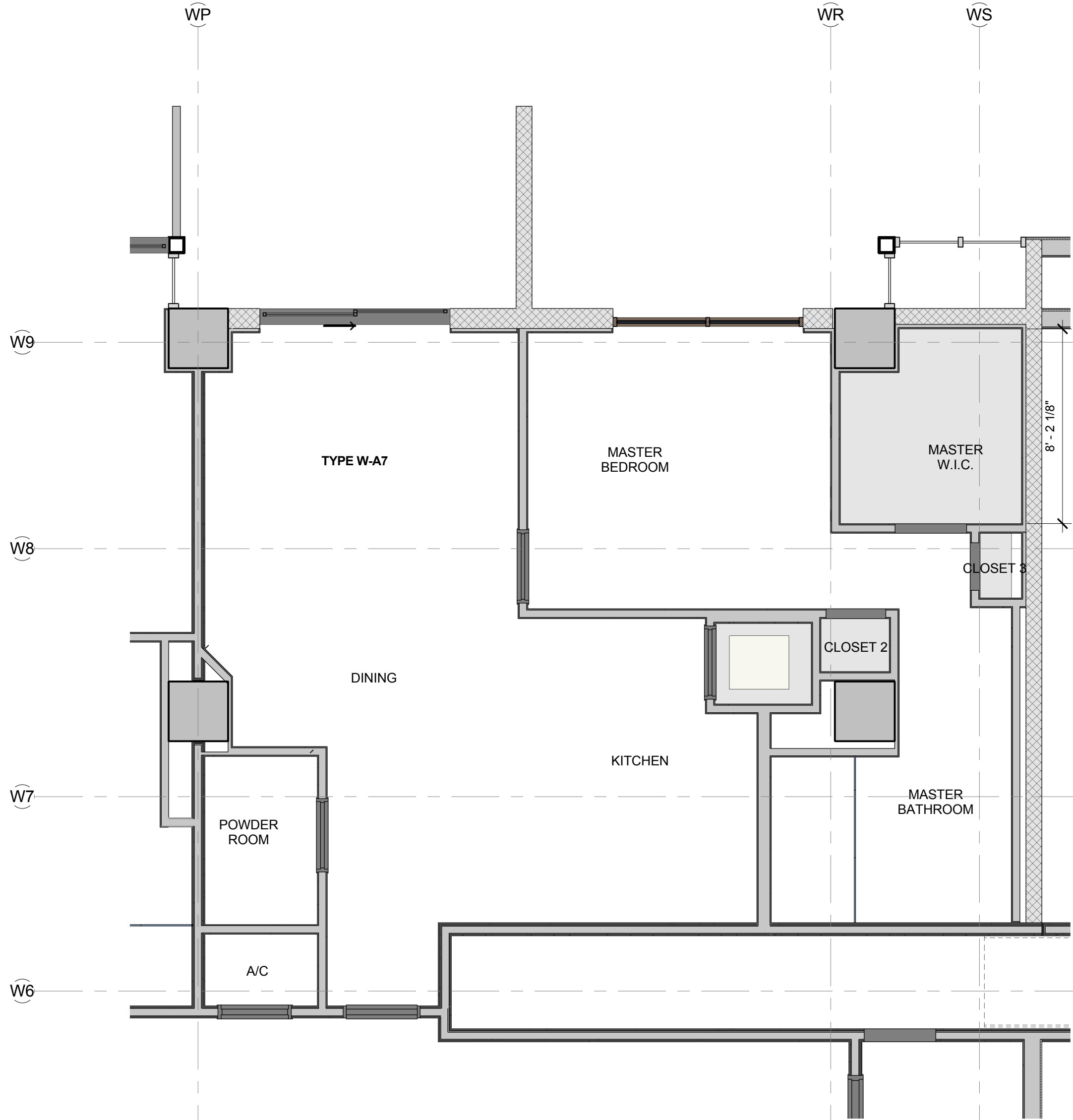
- SUSPENDED 2'X2' ACOUSTICAL CEILING PANELS
- SUSPENDED 2'X4' ACOUSTICAL CEILING PANELS
- CEMENT PLASTER (INTERIOR) OR STUCCO (EXTERIOR) CEILING
- EXPOSED UNDERSIDE OF FLOOR OR ROOF STRUCTURE
- ROOF OR CEILING ACCESS PANEL
- 2'X4' FLUORESCENT LUMINAIRE, RECESSED, SEE ELECTRICAL DRAWINGS FOR TYPE
- 2'X4' FLUORESCENT LUMINAIRE, SURFACE MOUNTED, SEE ELECTRICAL DRAWINGS FOR TYPE
- 1'X4' FLUORESCENT LUMINAIRE, RECESSED, SEE ELECTRICAL DRAWINGS FOR TYPE
- 1'X4' FLUORESCENT LUMINAIRE, WALL MOUNTED, SEE ELECTRICAL DRAWINGS FOR TYPE
- 2'X2' FLUORESCENT LUMINAIRE, RECESSED, SEE ELECTRICAL DRAWINGS FOR TYPE
- 2'X2' FLUORESCENT LUMINAIRE, SURFACE MOUNTED, SEE ELECTRICAL DRAWINGS FOR TYPE
- FLUORESCENT STRIP LUMINAIRE, SURFACE OR PENDANT MOUNTED, SEE ELECTRICAL DRAWINGS FOR TYPE
- RECESSED OR SURFACE MOUNTED LUMINAIRE, SEE ELECTRICAL DRAWINGS FOR TYPE
- WALL MOUNTED LUMINAIRE, SEE ELECTRICAL DRAWINGS FOR TYPE
- WALL WASH LUMINAIRE, SEE ELECTRICAL DRAWINGS FOR TYPE
- ILLUMINATED EXIT SIGN, WALL MOUNTED
- ILLUMINATED EXIT SIGN, CEILING MOUNTED
- ILLUMINATED EXIT SIGN, CEILING MOUNTED ARROW INDICATES DIRECTION OF EGRESS
- FIRE ALARM SMOKE DETECTOR SEE ELECTRICAL DRAWINGS
- FIRE ALARM HEAT DETECTOR, SEE ELECTRICAL DRAWINGS
- CEILING MOUNTED SPEAKER, SEE ELECTRICAL DRAWINGS
- SPRINKLER HEADS, SEE FIRE PROTECTION DRAWINGS FOR TYPE
- 2'-0" TALL LOUVER LOCATION
- 1'-4" TALL LOUVER LOCATION

CEILING MATERIAL KEY

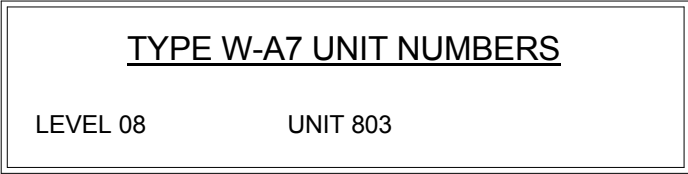
- ACOUSTICAL CEILING PANEL, NUMBER DESIGNATES TYPE
- FINISH CEILING HEIGHT ABOVE FINISH FLOOR
- GYPSUM BOARD CEILING WITH FINISH CEILING HEIGHT A.F.F.
- LETTER DESIGNATES TYPE OF PAINT, NUMBER DESIGNATES PAINT COLOR
- STUCCO CEILING WITH FINISH CEILING HEIGHT A.F.F.
- LETTER DESIGNATES TYPE OF PAINT, NUMBER DESIGNATES PAINT COLOR
- CEMENT PLASTER CEILING WITH FINISH CEILING HEIGHT A.F.F.
- LETTER DESIGNATES TYPE OF PAINT, NUMBER DESIGNATES PAINT COLOR
- EXPOSED UNDERSIDE OF STRUCTURAL ELEMENTS, LETTER DESIGNATES TYPE OF PAINT, NUMBER DESIGNATES PAINT COLOR
- SPECIALTY METAL CEILING WITH FINISH CEILING HEIGHT A.F.F.

CEILING PLAN KEY NOTES

- 1 PROVIDE CONTROL JOINTS ON ALL GYPSUM BOARD, STUCCO, AND CEMENT PLASTER CEILINGS PER SPECS.
- 2 SMOKE DETECTORS SHALL BE INSTALLED A MINIMUM OF 3'-0" AWAY FROM AIR CONDITIONING DIFFUSERS.
- 3 ALL CEILING FIXTURES AND DEVICES SHALL BE ALIGNED WHERE POSSIBLE IN GYPSUM BOARD, STUCCO, OR CEMENT PLASTER CEILINGS UNLESS OTHERWISE NOTED.
- 4 ALL CEILING FIXTURES AND DEVICES SHALL BE PLACED CENTERED ON THE CEILING PANELS.
- 5 CEILING ACCESS PANELS SHALL BE PROVIDED AS REQUIRED, COORDINATE LOCATION WITH MECHANICAL AND ELECTRICAL DRAWINGS.
- 6 FOR ACOUSTIC DROPPED CEILING INFORMATION REFER TO DETAIL 2/A.755.



2 LEVEL 08 - UNIT TYPE W-A7 RCP
1/4" = 1'-0"

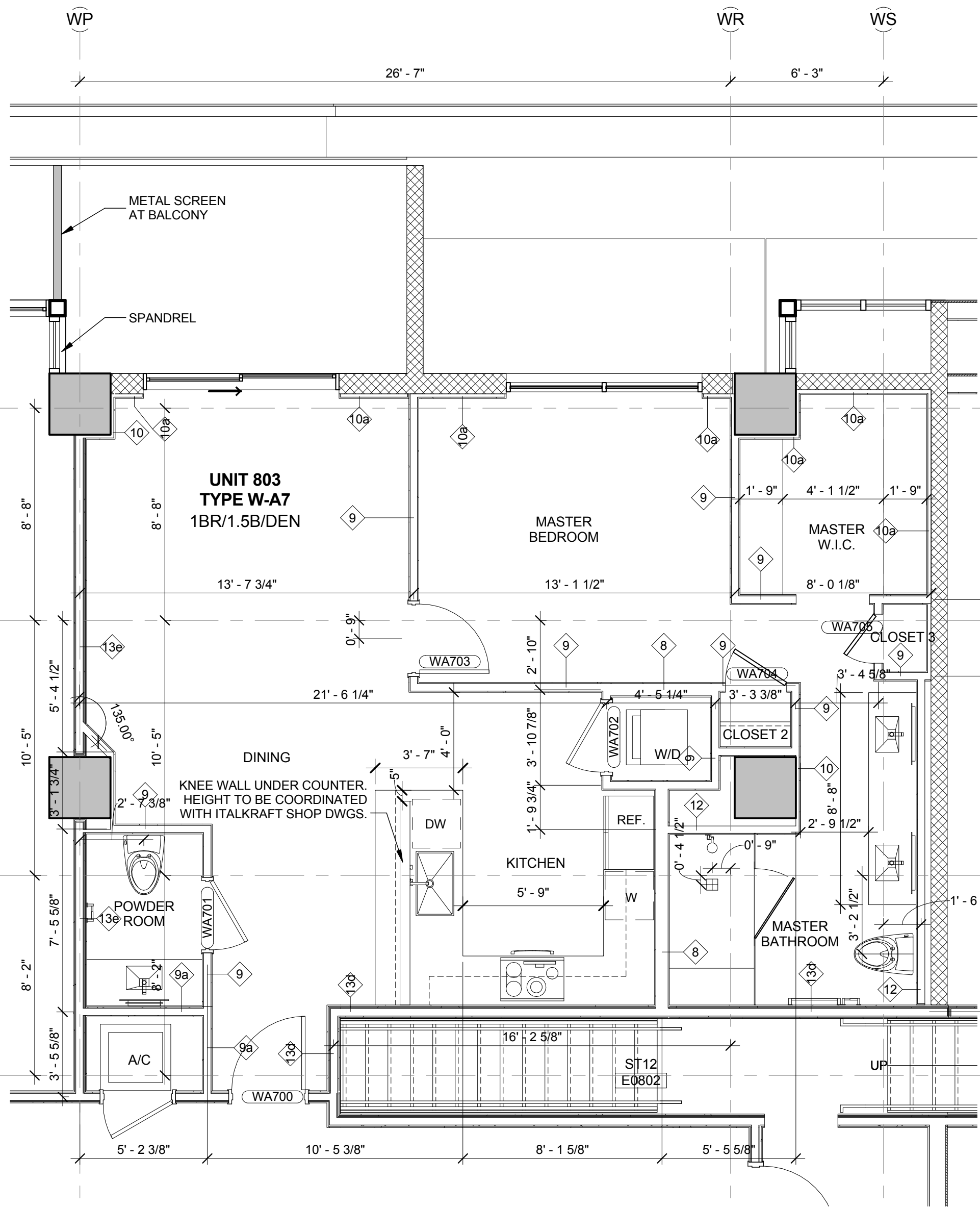


FAIR HOUSING REQUIREMENTS

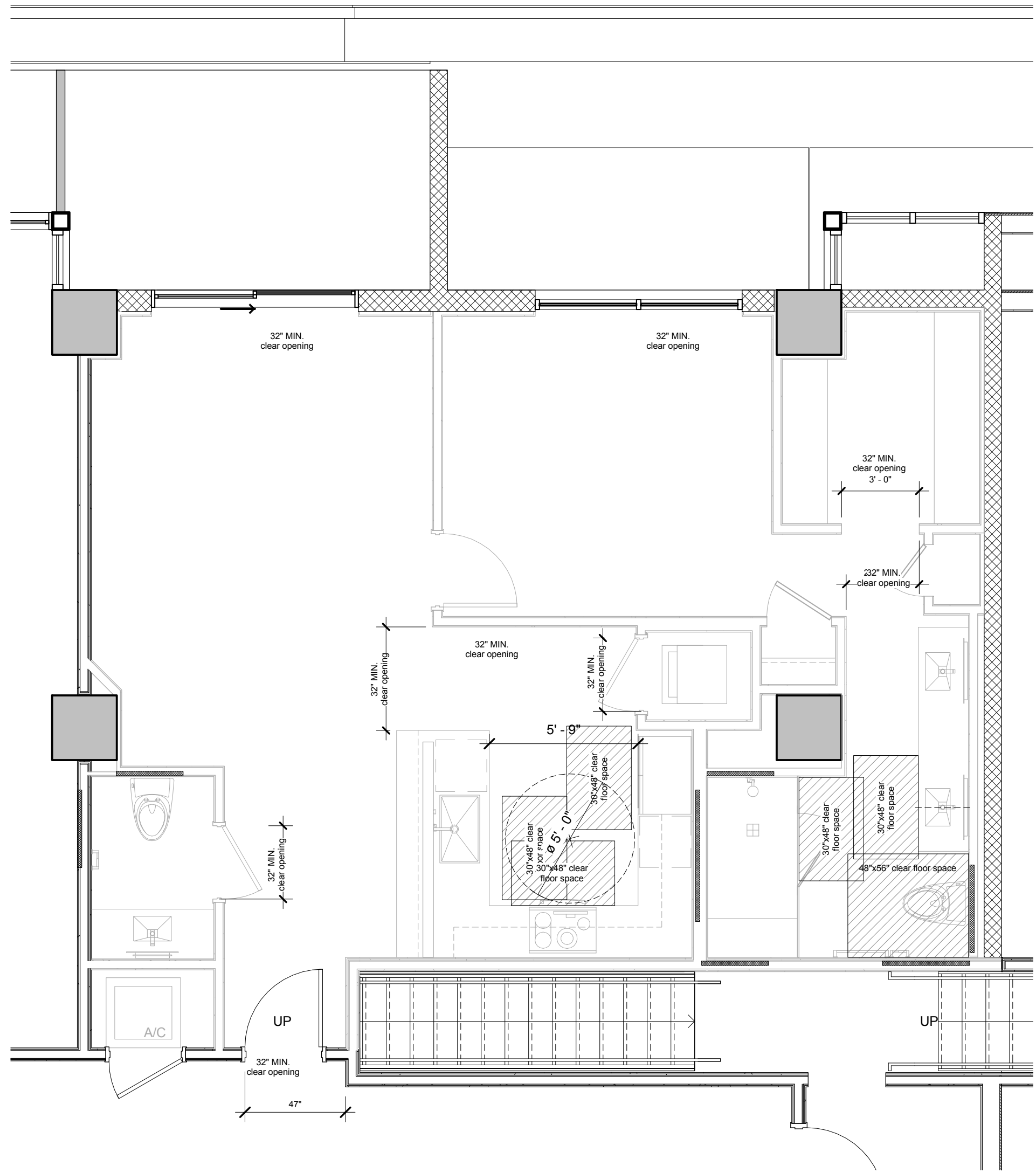
- NOTE:
1. ALL SLIDING GLASS DOOR TO HAVE CLEAR 32" WIDE OPENING TO BALCONY.
2. G.C. TO CHECK ALL FIXTURES SPECIFICATIONS W/ PRODUCT MANUFACTURER AND V.I.F. ROUGH DIMENSION BEFORE ANY FRAMING WORK.
3. PROVIDE MINIMUM REINFORCING FOR GRAB BARS AT HEAD, FOOT AND BACK WALL OF BATHTUB AND SHOWER. PROVIDE MINIMUM REINFORCING FOR GRAB BARS BEHIND TOILET. REFER TO DETAILS BELOW. PROVIDE REINFORCEMENT IN ALL BATHROOMS. REINFORCING SHOULD BE BETWEEN 32" TO 38" ABOVE FINISHED FLOOR. STRUCTURAL STRENGTH PER SECTION 11-4.26.3 AND GC TO SUBMIT SHOP DRAWINGS.
4. ALL DOORS MUST PROVIDE A CLEAR OPENING OF 32" MINIMUM.
5. PROVIDE BLOCKING BEHIND UNIT DOORS FOR INSTALLATION OF DOOR BUMPERS AS NOTED IN DOOR HARDWARE SCHEDULE.

FAIR HOUSING LEGEND

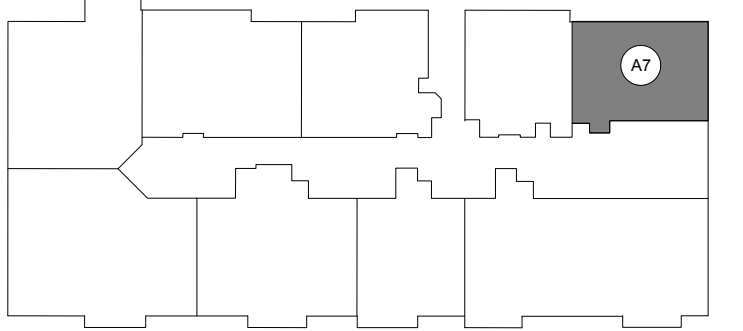
-
- REINFORCING IN WALLS OR FLOORS FOR GRAB BARS
-
- MIN. CLEAR FLOOR SPACE AT EACH FIXTURE
-
- MIN. CLEAR FLOOR SPACE OUTSIDE SWING OF DOOR



1 LEVEL 08 - UNIT TYPE W-A7 FLOOR PLAN
1/4" = 1'-0"

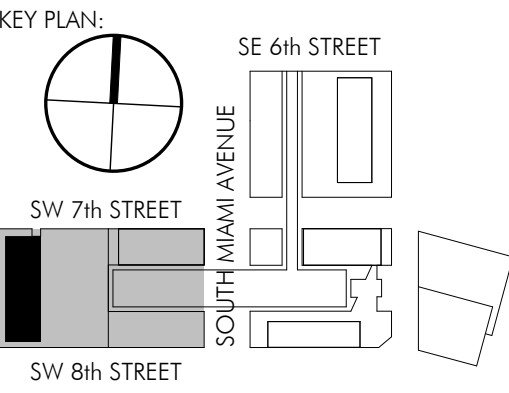


3 LEVEL 08 - UNIT TYPE W-A7 FHA PLAN / SPEC B BATHROOM
1/4" = 1'-0"



BCC WEST

VOLUME 2 OF 5



CONTRACT DOCUMENTS

MARCH 8, 2013

REV.#	DESCRIPTION	DATE
1	PERMIT REVIEW COMMENTS	2013.05.01
2	PERMIT REVIEW COMMENTS	2013.06.07
	GMP SET	2013.07.12
3	Bulletin #11	2014.03.11
4	PCD #42	2014.05.27
5	Bulletin #13	2014.07.31
6	RFI #4075	2014.10.22

ARQUITECTONICA PROJECT NUMBER: 2869

SEAL/SIGNATURE/DATE:

Architect/Engineer of Record
Office Registration # AA C000465

ALL DESIGN AND CONSTRUCTION DRAWINGS ARE THE PROPERTY OF ARQUITECTONICA INTERNATIONAL CORP. ALL COPYRIGHTS RESERVED. NO UNAUTHORIZED REPRODUCTION OR ELECTRONIC MANIPULATION OF ANY PORTION OF THESE DRAWINGS IN WHOLE OR IN PART ARE TO BE MADE WITHOUT THE WRITTEN PERMISSION OF ARQUITECTONICA INTERNATIONAL CORP.

DRAWING NAME:

UNIT TYPE W-A7

SCALE: As indicated

W.A.155